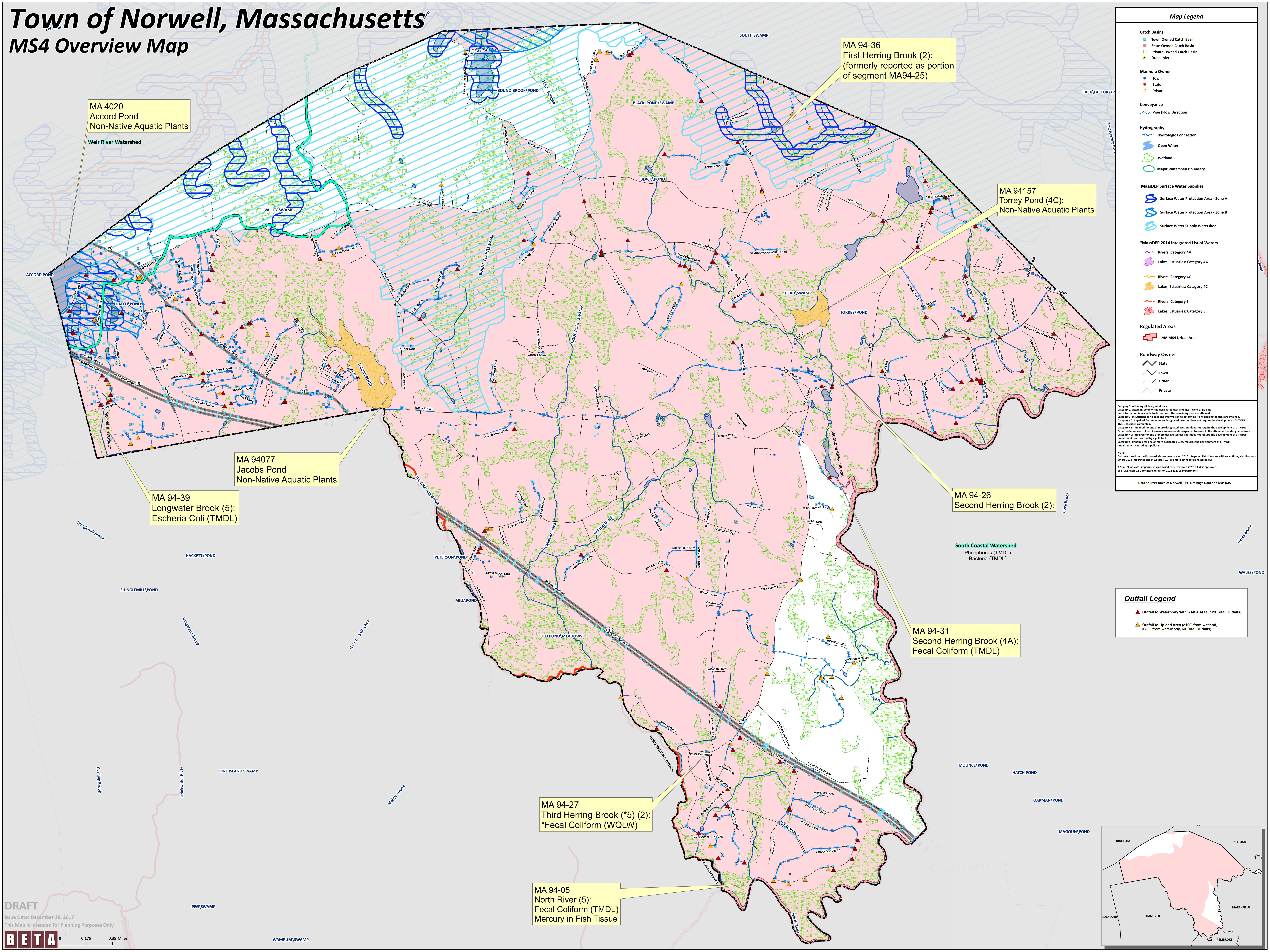


# Town of Norwell, Massachusetts

## MS4 Overview Map



MA 4020  
Accord Pond  
Non-Native Aquatic Plants

Weir River Watershed

MA 94-36  
First Herring Brook (2):  
(formerly reported as portion  
of segment MA94-25)

MA 94157  
Torrey Pond (4C):  
Non-Native Aquatic Plants

MA 94077  
Jacobs Pond  
Non-Native Aquatic Plants

MA 94-39  
Longwater Brook (5):  
Escheria Coli (TMDL)

MA 94-26  
Second Herring Brook (2):

MA 94-31  
Second Herring Brook (4A):  
Fecal Coliform (TMDL)

MA 94-27  
Third Herring Brook (\*5) (2):  
\*Fecal Coliform (WQLW)

MA 94-05  
North River (5):  
Fecal Coliform (TMDL)  
Mercury in Fish Tissue

### Map Legend

#### Catch Basins

- Town Owned Catch Basin
- State Owned Catch Basin
- Private Owned Catch Basin
- Drain Inlet

#### Manhole Owner

- Town
- State
- Private

#### Conveyance

- Pipe (Flow Direction)

#### Hydrography

- Hydrologic Connection
- Open Water
- Wetland
- Major Watershed Boundary

#### MassDEP Surface Water Supplies

- Surface Water Protection Area - Zone A
- Surface Water Protection Area - Zone B
- Surface Water Supply Watershed

#### \*MassDEP 2014 Integrated List of Waters

- Rivers: Category 4A
- Lakes, Estuaries: Category 4A
- Rivers: Category 4C
- Lakes, Estuaries: Category 4C
- Rivers: Category 5
- Lakes, Estuaries: Category 5

#### Regulated Areas

- MA MS4 Urban Area

#### Roadway Owner

- State
- Town
- Other
- Private

Category 2: Attaining all designated uses.  
Category 3: Attaining some of the designated uses and insufficient or no data and information is available to determine if the remaining uses are attained.  
Category 4: Insufficient or no data and information to determine if any designated uses are attained.  
Category 4A: Impaired for one or more designated uses but does not require the development of a TMDL.  
Category 4B: Impaired for one or more designated uses but does not require the development of a TMDL.  
Category 4C: Impaired for one or more designated uses but does not require the development of a TMDL.  
Category 5: Impaired for one or more designated uses, requires the development of a TMDL.  
Impairment is caused by a pollutant.  
NOTE:  
Call outs based on the Proposed Massachusetts year 2016 Integrated List of waters with exceptions/clarifications where 2014 Integrated List of waters (2014) are more stringent as noted below.  
A Star (\*) indicates impairments proposed to be removed if 2016 SW is approved.  
See IDDE table 10-1 for more details on 2014 & 2016 impairments.

Data Source: Town of Norwell, EPC Drainage Data and MassGIS

### Outfall Legend

- Outfall to Waterbody within MS4 Area (129 Total Outfalls)
- Outfall to Upland Area (>100' from wetland, >200' from waterbody, 60 Total Outfalls)

DRAFT

Issue Date: December 18, 2017  
This Map is Intended for Planning Purposes Only

BETA

0 0.175 0.35 Miles

WAMPUM/SWAMP